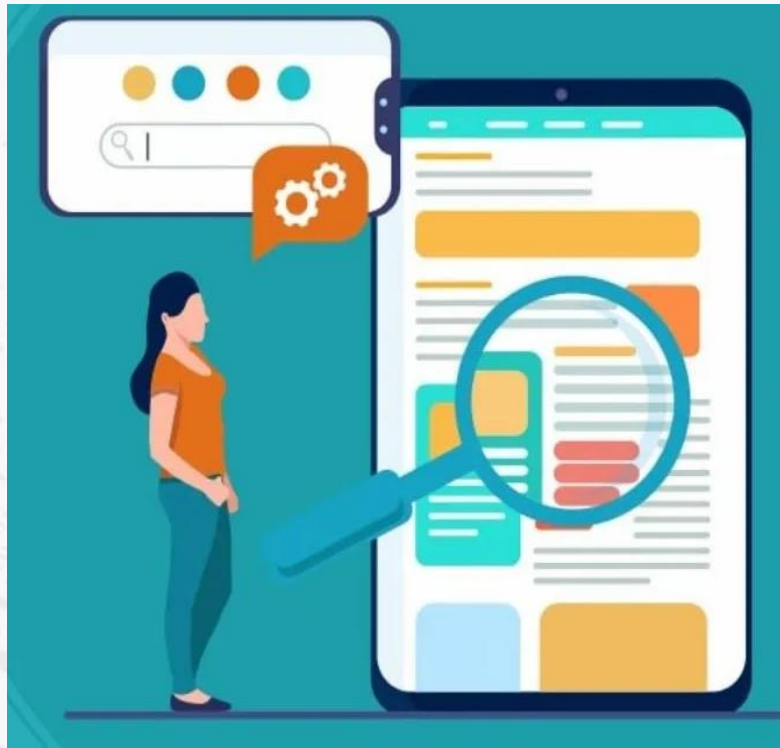


etoe  
**reBOOT.**

ETOE  
**REBOOT**  
**PROGRAM**





Contextualized intelligence is about the ability to adapt and apply what has been learned, such as skills, knowledge etc in different scenarios or situations.

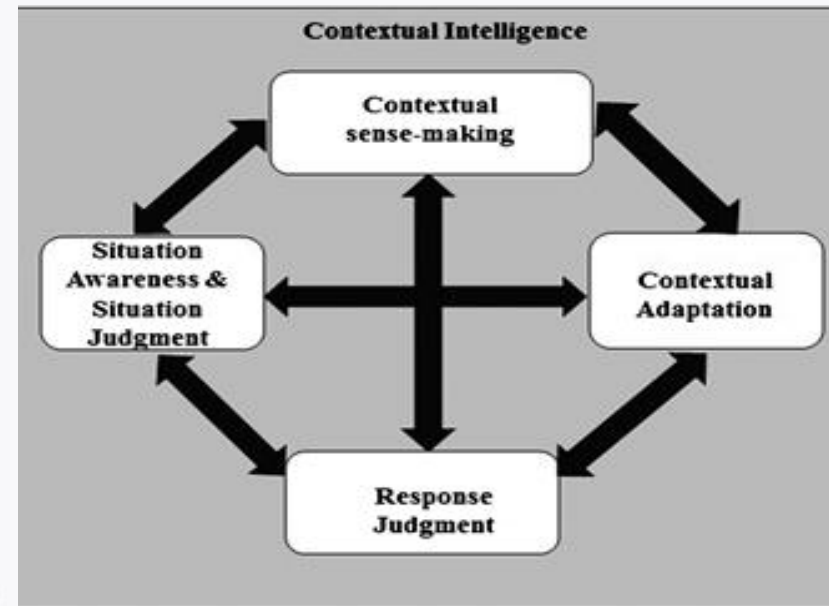
It also refers to the proficiency to adapting knowledge and skills and applying them in different situations or environments.

Robert Sternberg : he coined the term ‘Contextualized Intelligence” in 1984 at Yale University.

It is a cognitive process that involves, thought , understanding and perception.



*Context is the background against which an event takes place; it makes information meaningful.*

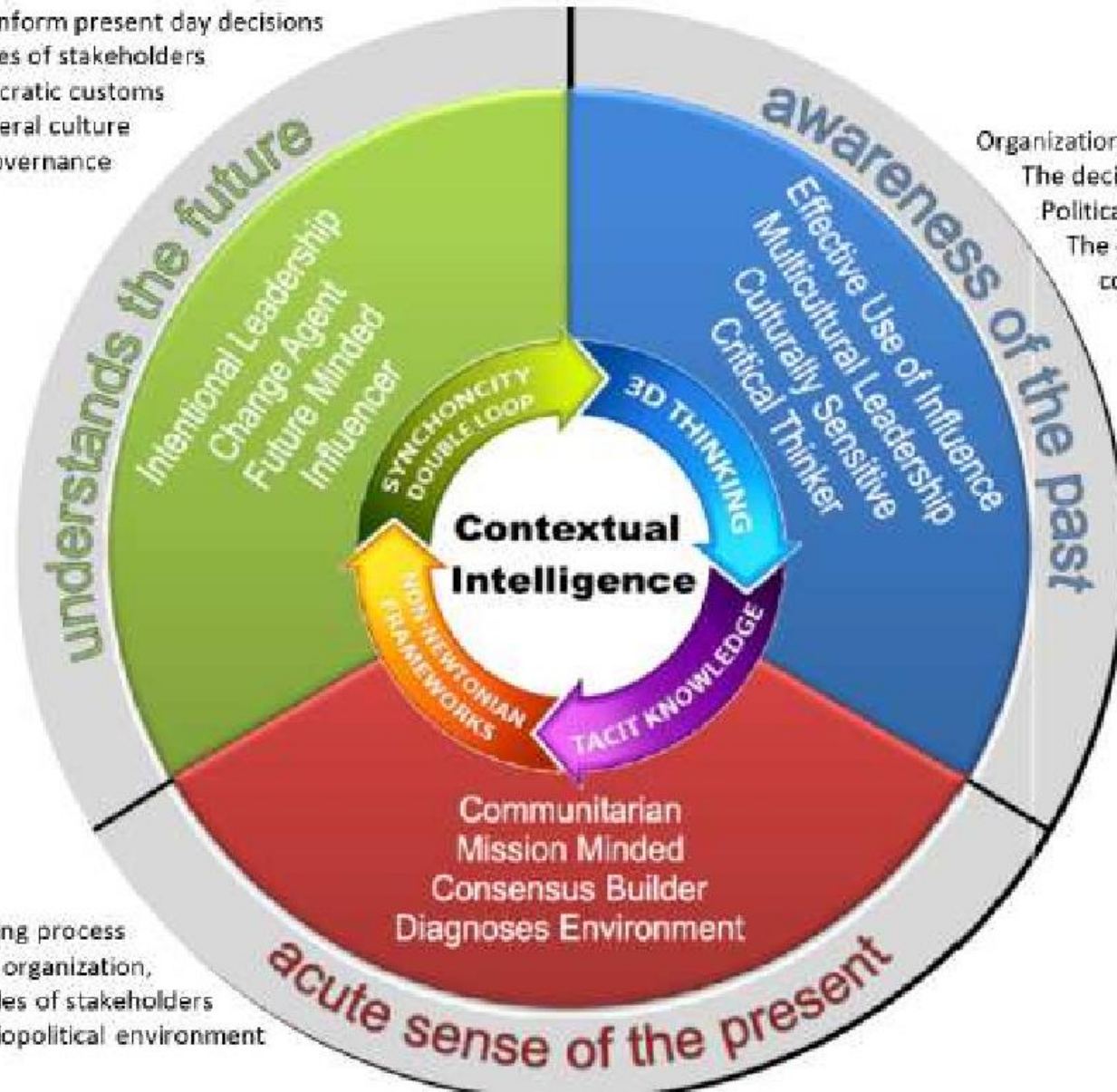


In simple words, practical intelligence can be defined as street smart. Context matters. CI needs one to move forward beyond an analysis of institutional context. This type of intelligence requires practical intelligence where contextual reference is of outmost importance.



The paradigms that inform present day decisions

- Perspectives of stakeholders
- Idiosyncratic customs
- General culture
- Governance



- Organizational culture
- The decision-making process
- Political structure and hierarchy
- The organization's or context's past

- The decision-making process
- Key players in the organization,
- Values and attitudes of stakeholders
- Knowledge of sociopolitical environment

Contextual Intelligence deals with the practical application of knowledge and information to real – world situations and can be defined as : “ the capacity to exploit business moments and operational events in a way that enables to make informed decisions and take effective actions in various changing and uncertain situations”.

